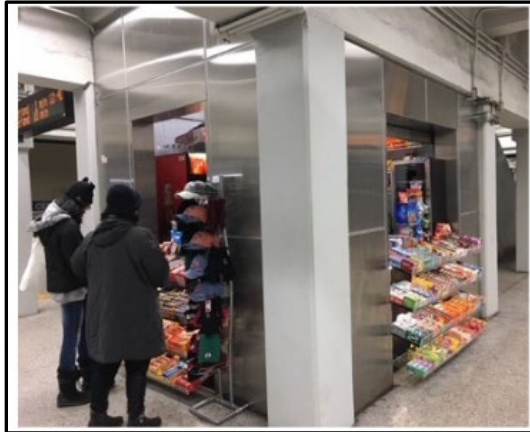


Retail Spaces at the Government Center

GREYSTONE

Spring 2024 MBTA Invitation to Bid (ITB)

**AVAILABLE FOR LEASE 100± SF (BLUE LINE) | RETAIL SPACE
AVAILABLE FOR LEASE 400± SF (GREEN LINE) | RETAIL SPACE
Bids Due Spring 2024 (Date TBD)**

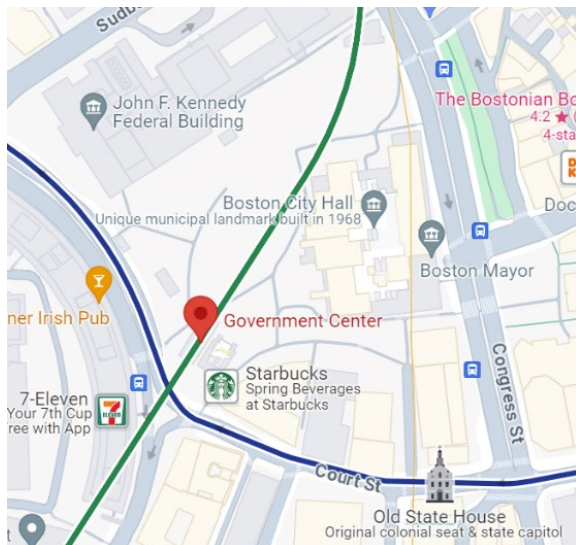


Property Details

Overview: Government Center Station serves the MBTA Blue and Green Lines and lies in the heart of downtown Boston. It provides easy access to the financial district and Logan Airport.

These retail spaces provide a rare opportunity to be positioned on the Blue & Green Line platforms, which provide direct access to the daily MBTA ridership.

- Address: 1 Cambridge St. Boston, MA 02114
- Size: 100 SF & 400 SF
- Daily MBTA Ridership: 3,766
- Nearby Attractions
 - City Hall
 - Faneuil Hall
- ITB Release Date: Spring 2024



Register to receive updates on all MBTA retail opportunities at <https://mbtarealty.com/contact-us/>

